

Creating a shared learning network

supporting research, policy and practice

Gillian Crosby
Centre for Policy on Ageing

Web: www.cpa.org.uk
Email: grosby@cpa.org.uk



Agenda for change – government policy

- Government policy is focused on person centred approaches to ways of commissioning, providing and organising services rooted in listening to what older people want to help them live in their communities as they choose.
- The White Paper, 'Our Health, Our Care, Our Say' (January 2006) emphasises putting people in control, with more choice and a louder voice.
- 'A change in culture is required, moving away from services being service-led to being person centred, so that older people have a central role, not only in designing their care with the combination and type of service that most suits them, but also in planning the range of services that are available.' – *from Living Well in Later Life (March 2006)*
- There is a need for better mechanisms for ensuring the voices of older people are heard and that this 'evidence' is fed into policy development and service design
- This involves more efficient and effective implementation of research findings in practice to improve older people's quality of life.

Creating an evidence base

- Research should be a fundamental tool for the development of policy and practice.
- Despite calls for evidence-based policy and practice there remains a chronic under-use of research evidence from specialised sources and 'grey' literature.
- Too often much of the existing evidence-base of past research remains ignored and unexploited to the detriment of the new research and the outcome of the research findings.
- Robust reviewing of research and wider literature is needed to identify what works and what does not work.

A network of shared learning

- Existing research on ageing and older age could be better shared across government, and with academia, service providers and the voluntary sector.
- A network of shared learning is required to make research easily accessible to researchers and users of research.
- The DWP in 'Opportunity Age', its cross government strategy on ageing proposes to create an 'Observatory on Ageing' to share knowledge about ageing issues and service successes to provide a foundation for policy and promote cultural change.

Specialised information resources

- There is ignorance about the value and the existence of information resources.
- Specialised information sources and databases, especially those which include the diverse 'grey' literature of official reports and practice journals, are a vital source of evidence about what older people want.
- Heavy reliance on generalised or US databases means important evidence is not fed into the research process.

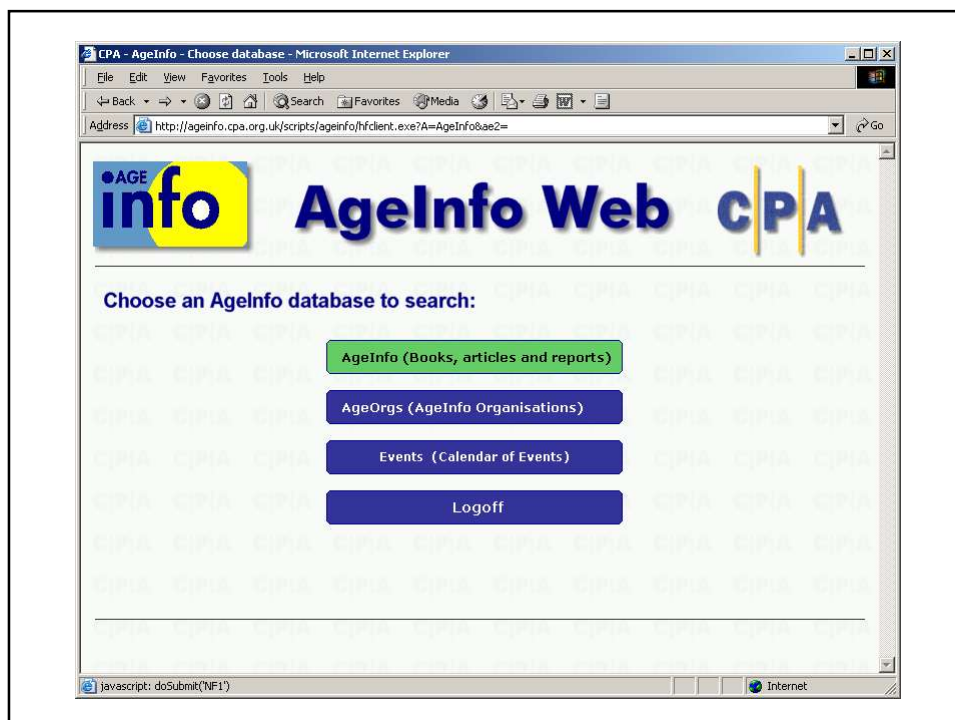
Centre for Policy on Ageing (CPA)

- CPA gathers, summarises and disseminates research evidence and good practice for users in all sectors, including older people.
- CPA has over many years built up a specialised multidisciplinary resource comprising books, policy reports, government publications, official statistics, and journals on matters around ageing and older age.
- CPA makes available a range of online databases and customised services so that information on a wide spread of topics around ageing can be accessed

CPA's information resources

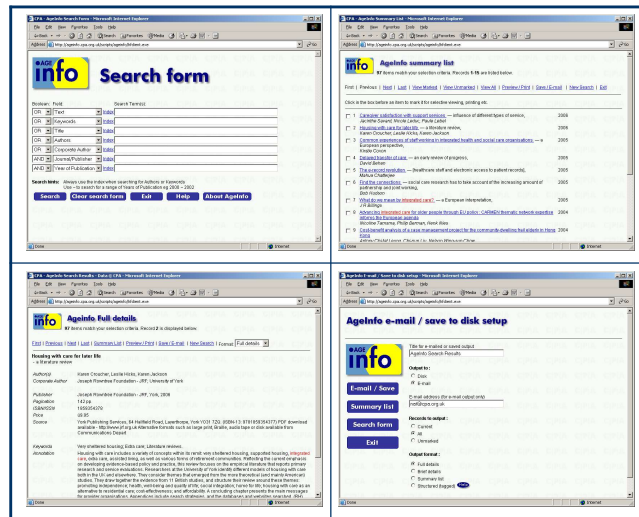
- **The Ageinfo information resource**

- has for many years, provided the UK's only resource dedicated to published and semi-published materials on older age issues including books, articles, research reports and practice evaluations. A search of Ageinfo is a necessary precursor to any new research project and key in the dissemination of published research materials once a project is complete.



Ageinfo database of books, articles and reports

www.cpa.org.uk/ageinfo

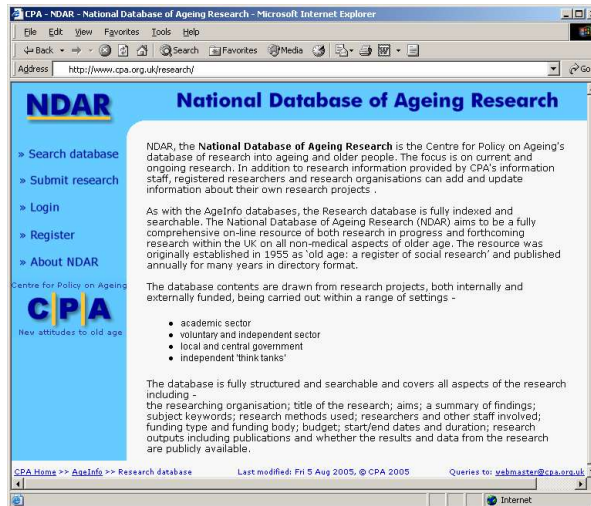


CPA's information resources

- **NDAR, the National Database of Ageing Research**
 - provides information on current and recently completed research projects, often before they reach the stage of publishing their results.

The National Database of Ageing Research

www.cpa.org.uk/research

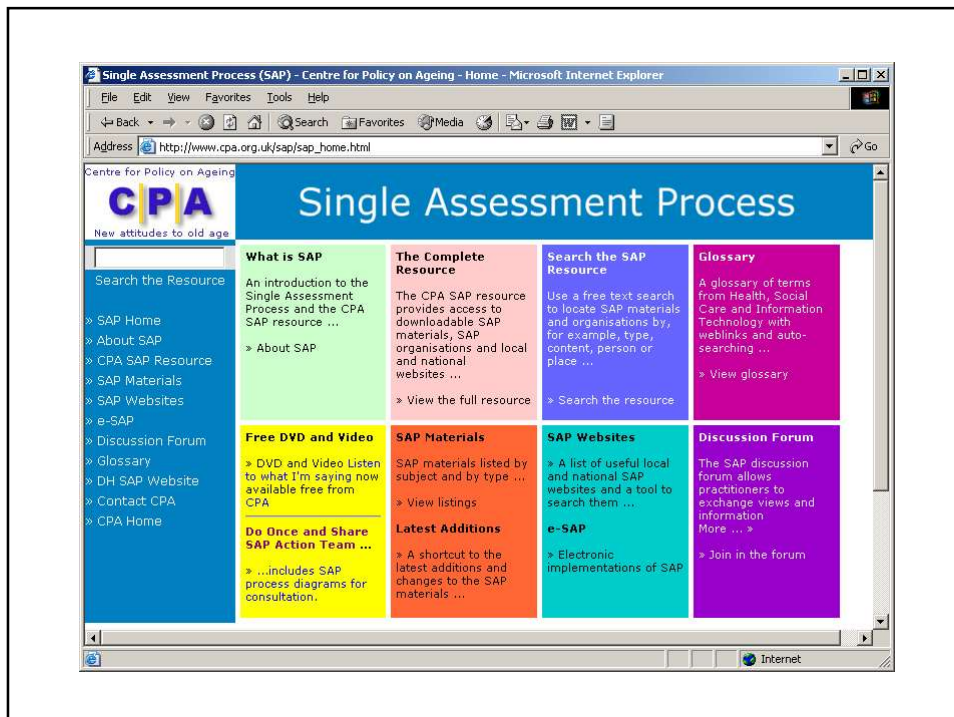
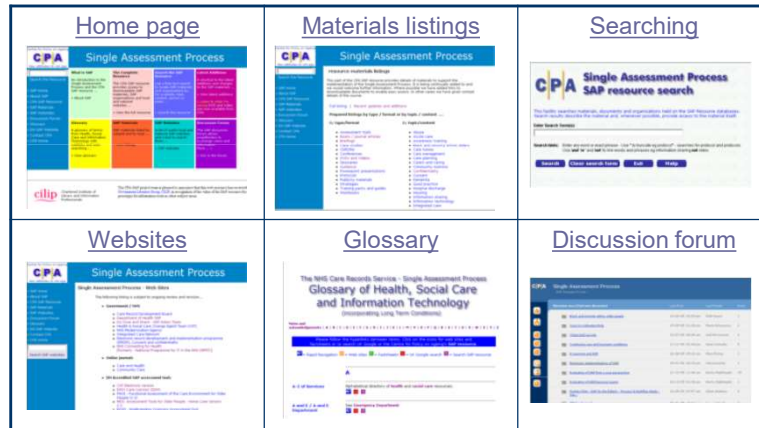


CPA's information resources

- **The CPA SAP (Single Assessment Process) resource**
 - an example of a 'practice based' resource which allows practitioners to exchange materials and ideas, directly feeding into the improvement of practice and also informing researchers of lessons learned in practice.

The CPA SAP resource...

www.cpa.org.uk/sap



Knowledge, policy and practice and research

- CPA's information resources reflect and illustrate the interaction and key symbiotic relationship between knowledge, policy and practice and research in the field of older age. Knowledge, policy and practice and research are the three legs of a stool and if any one is missing the stool will fall over.
- The new interdisciplinary Dynamics of Ageing research programme has an opportunity to truly advance our understanding of the needs and aspirations of all older people. It is vital that the evidence from this and all funded research is widely accessible to all through an established shared learning network.

Research, policy and practice - for the benefit of older people

Gillian Crosby
CPA,
September 2006

Centre for Policy on Ageing

CPA
New attitudes to old age