

Centre for Policy on Ageing

The Single Assessment Process (SAP) resource

Nat Lievesley, IT Manager, CPA

Wired for the Third Age
14 December 2006

The CPA SAP resource

- drawn from the SAP community
- reflects the changing needs of the SAP community
- uses shared information and materials provided by the SAP community
- provides a shared facility for mutual benefit and cooperation
- current – updated weekly

What's on the resource? ...

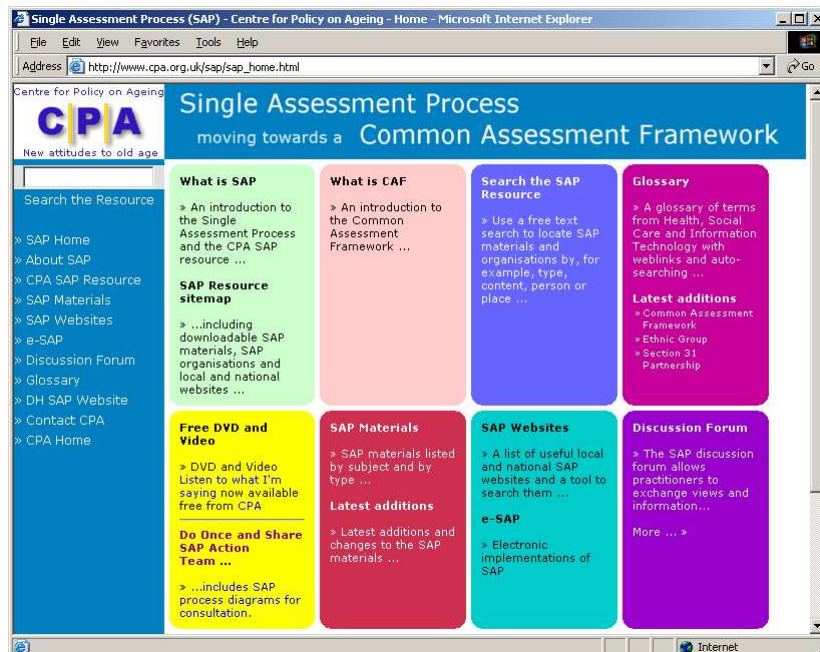
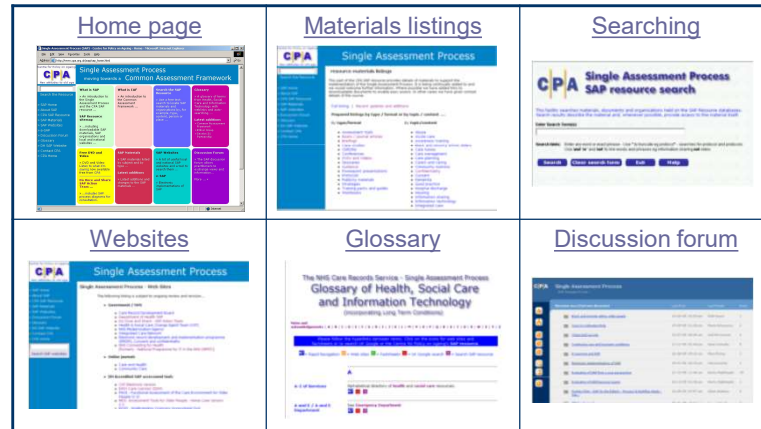
- SAP materials
 - listings
 - search facility
- Organisations
- Websites
 - government / nhs
 - assessment tools
 - local SAP websites
 - training and related sites
 - dedicated search engine
- Glossary
 - selected terms from Health and Social Care including Long-term conditions
- SAP Discussion forum
 - allows SAP professionals to share experiences, exchange views and promote best practice.

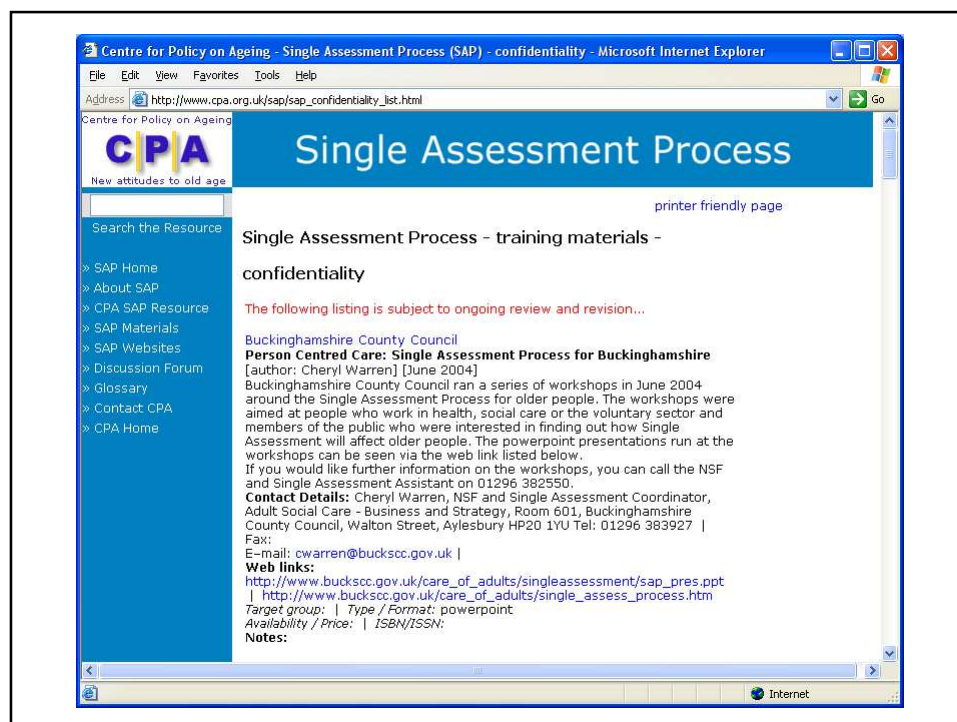
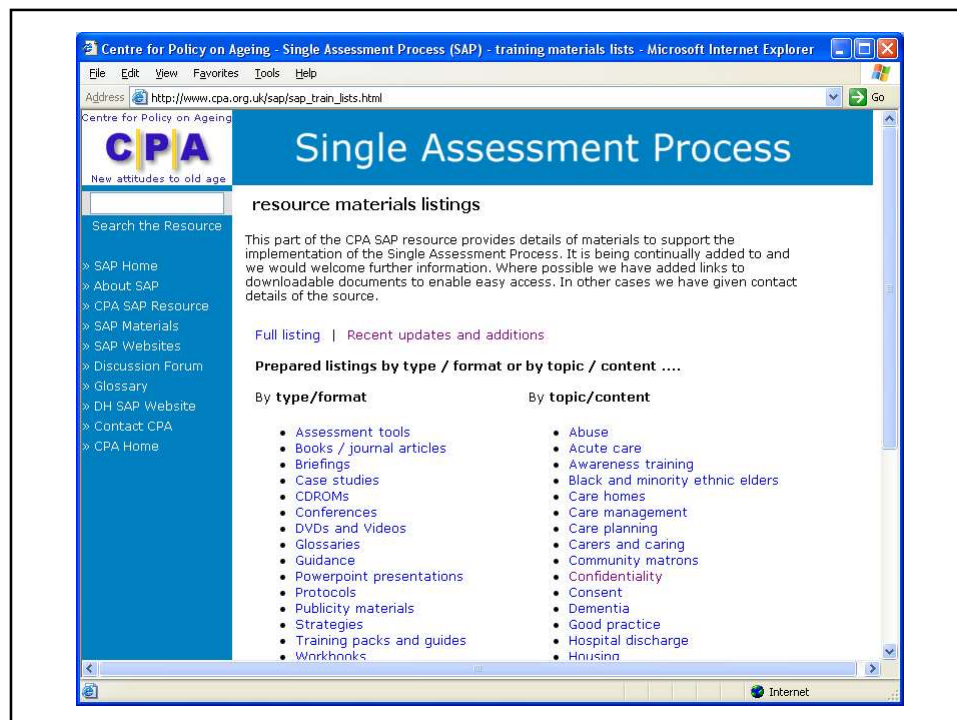
What type of materials?

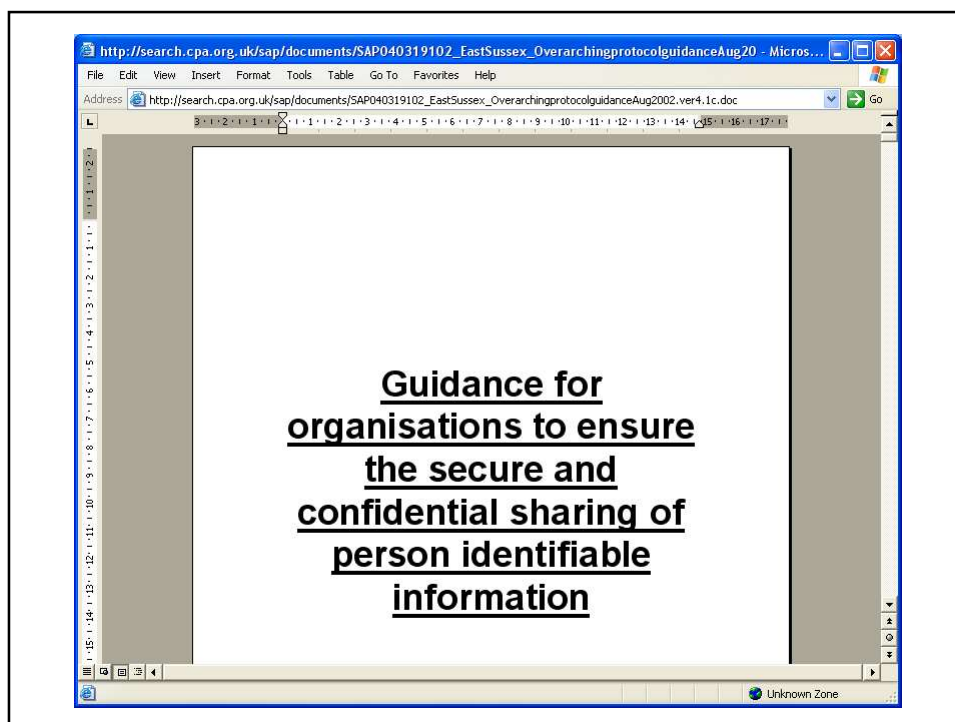
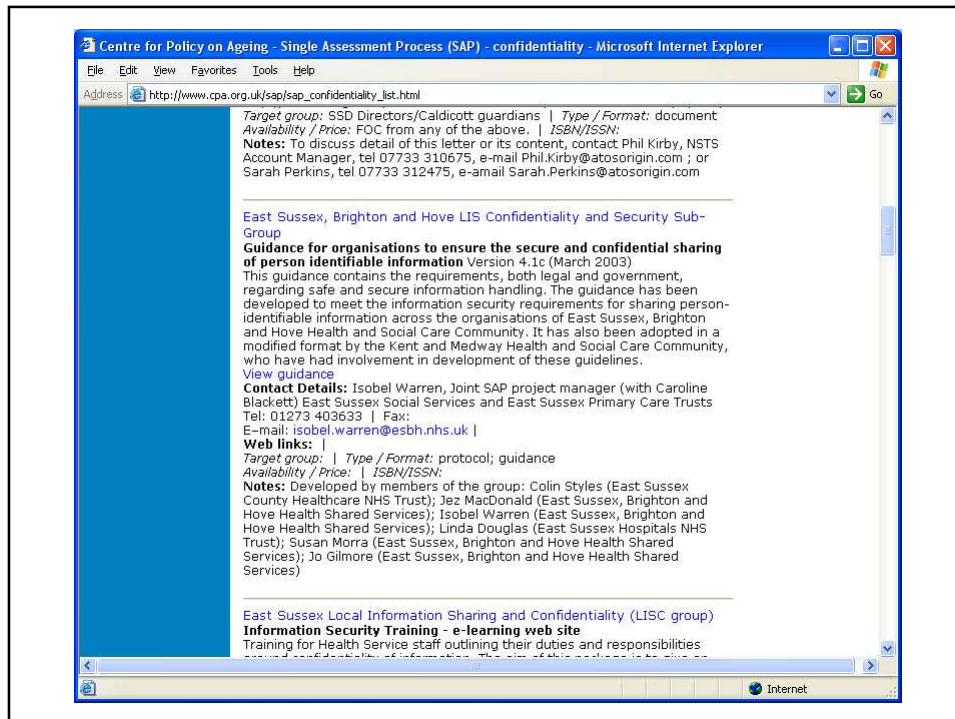
- Assessment tools
- Books / journal articles
- Briefings
- Case studies
- CD-ROMs
- Conferences
- Glossaries
- Guidance
- Powerpoint presentations
- Protocols
- Publicity materials
- Strategies
- Training packs and guides
- DVDs and Videos
- Workbooks

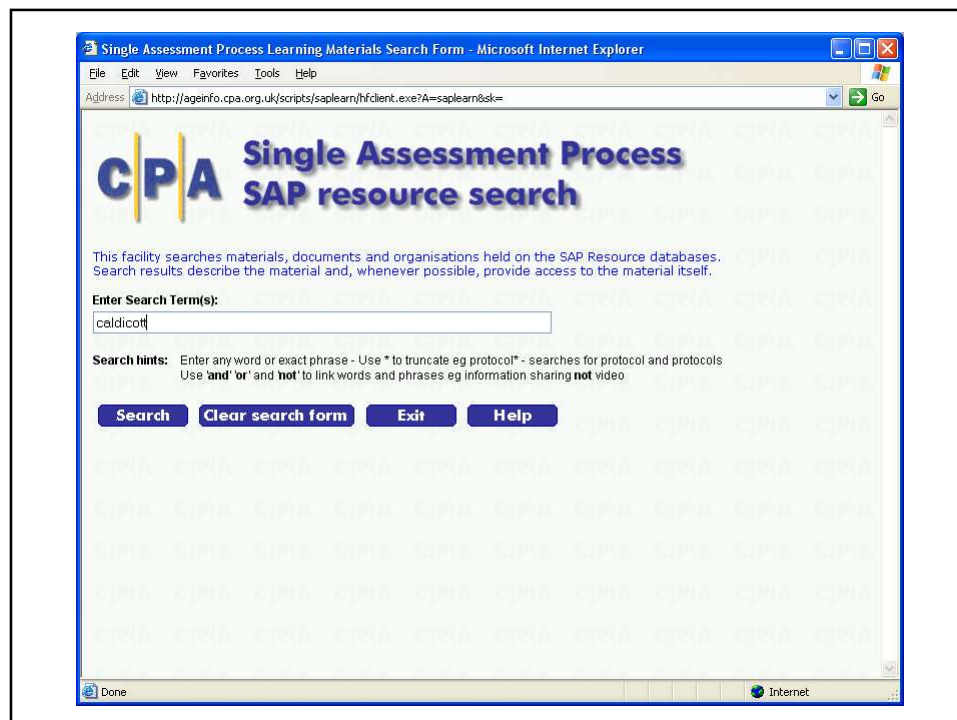
The CPA SAP resource...

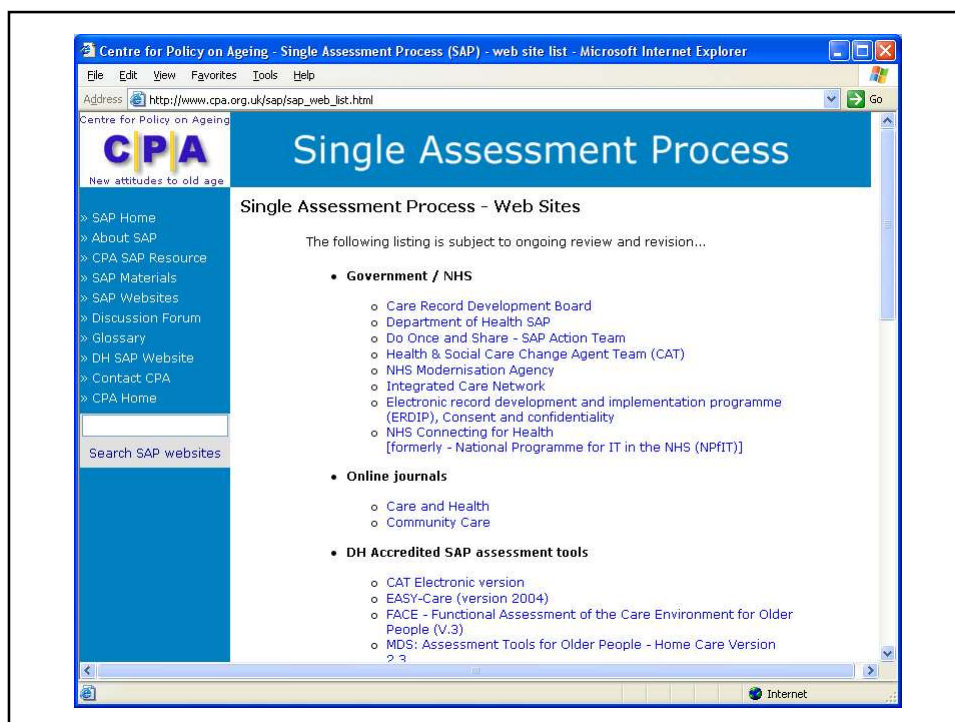
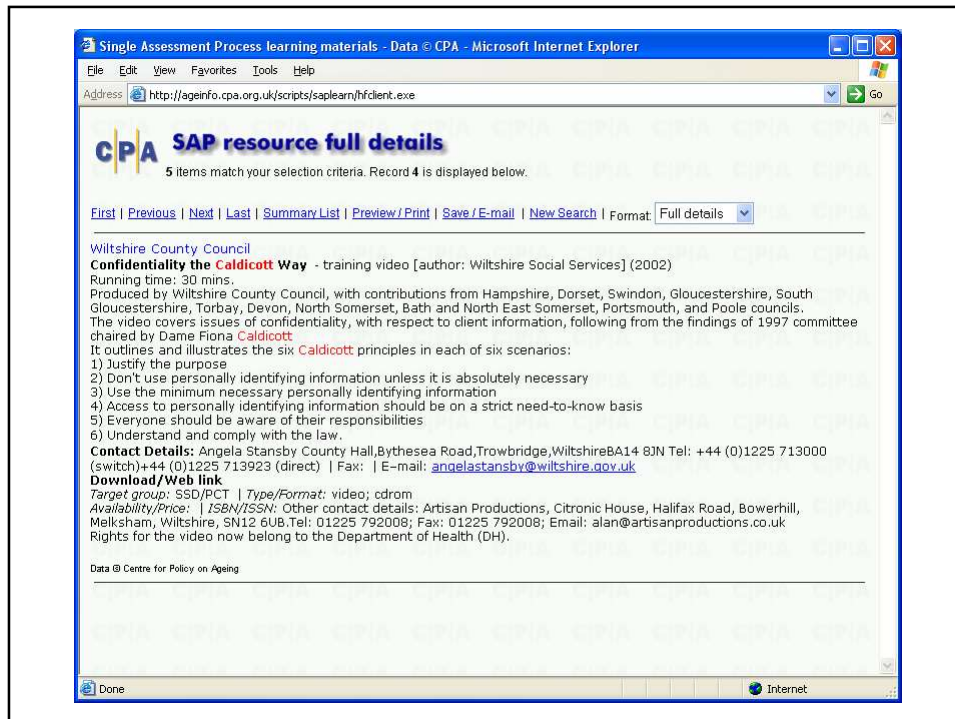
www.cpa.org.uk/sap

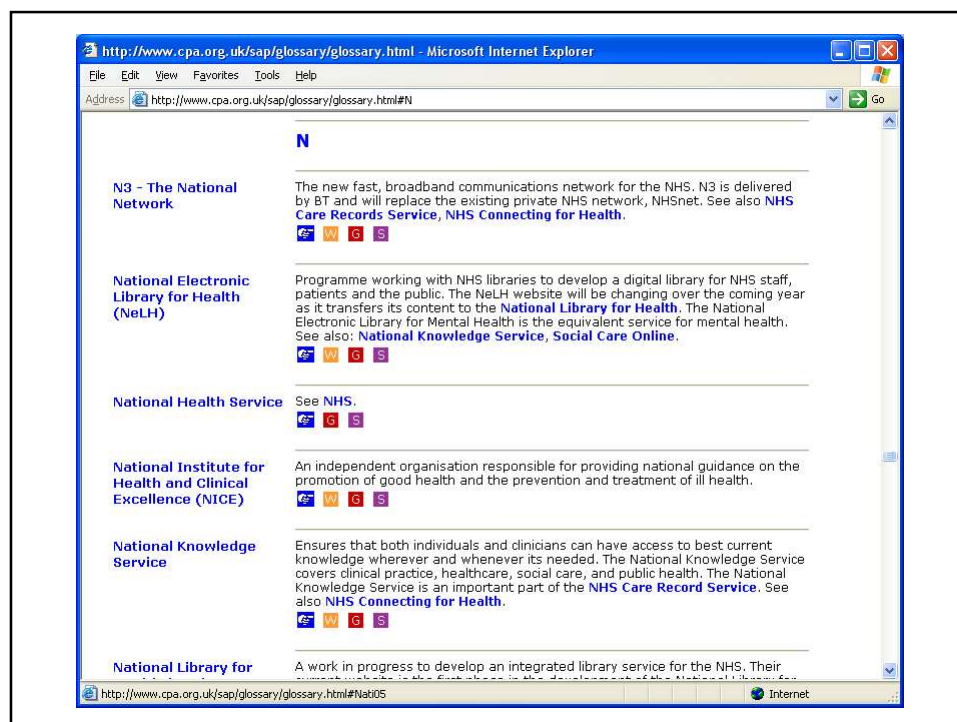
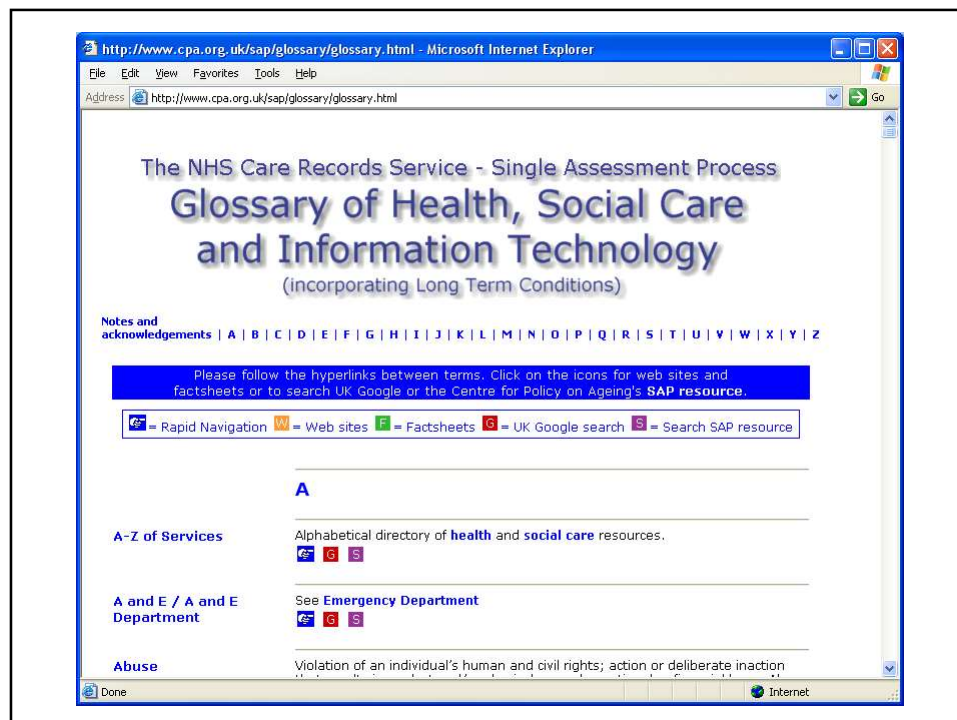


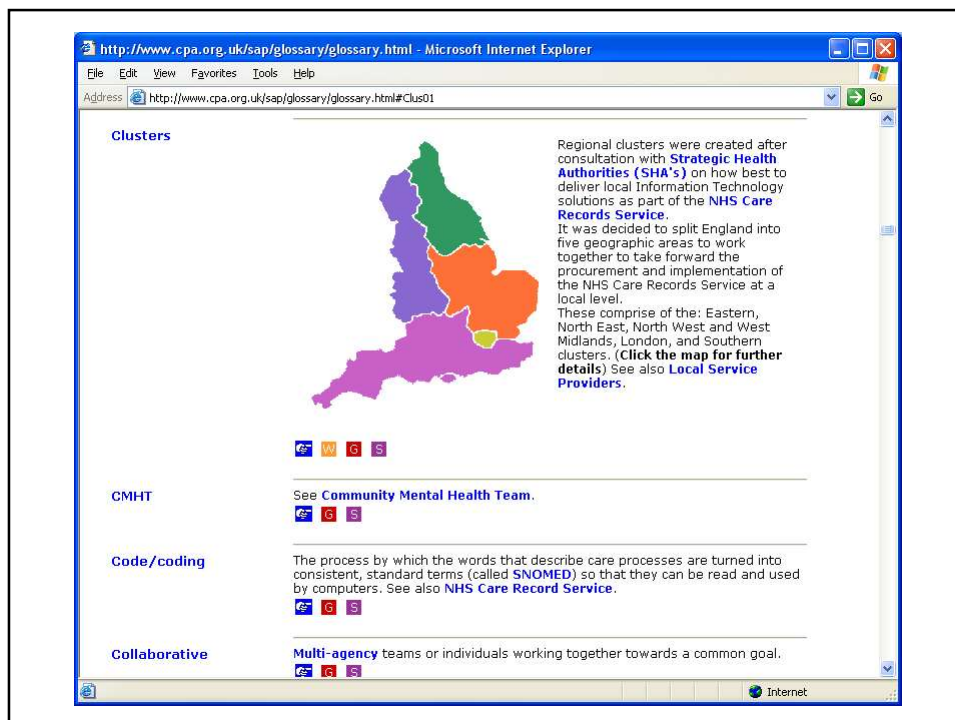
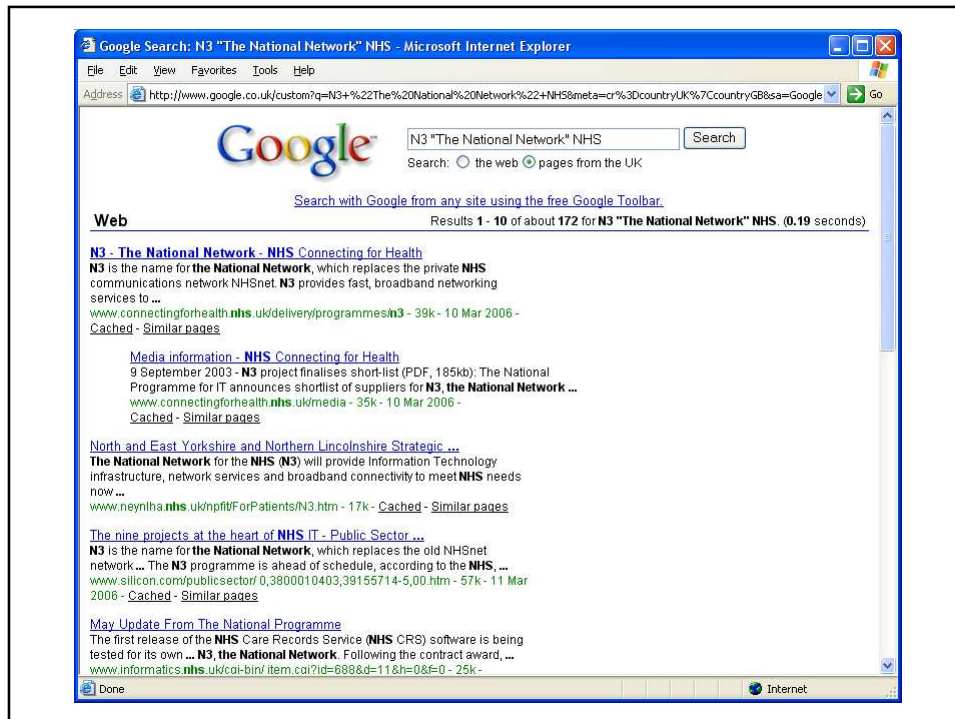


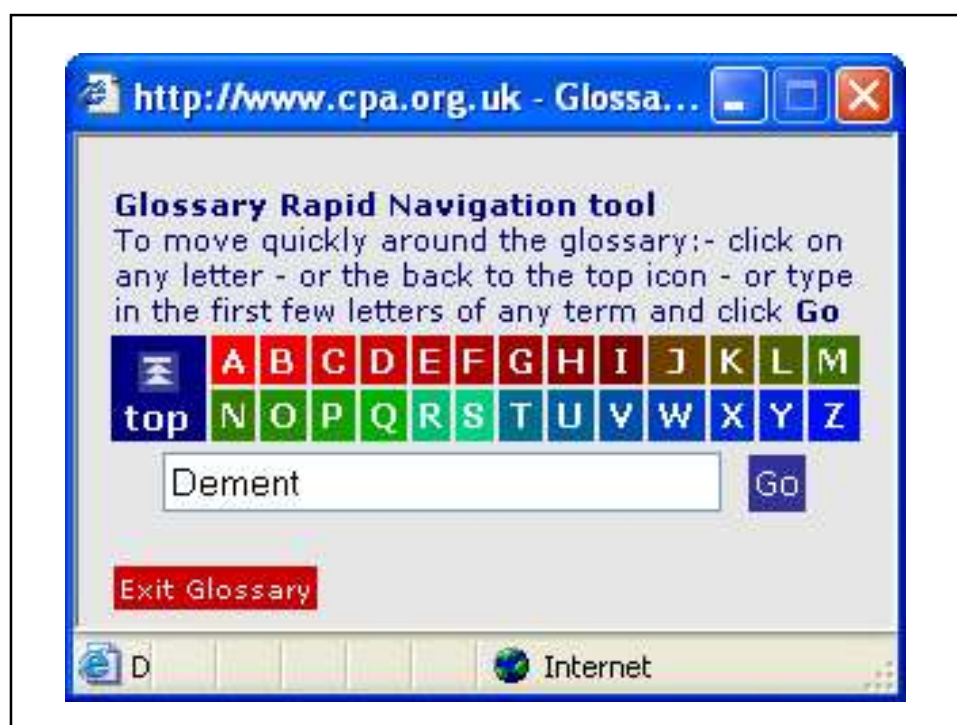
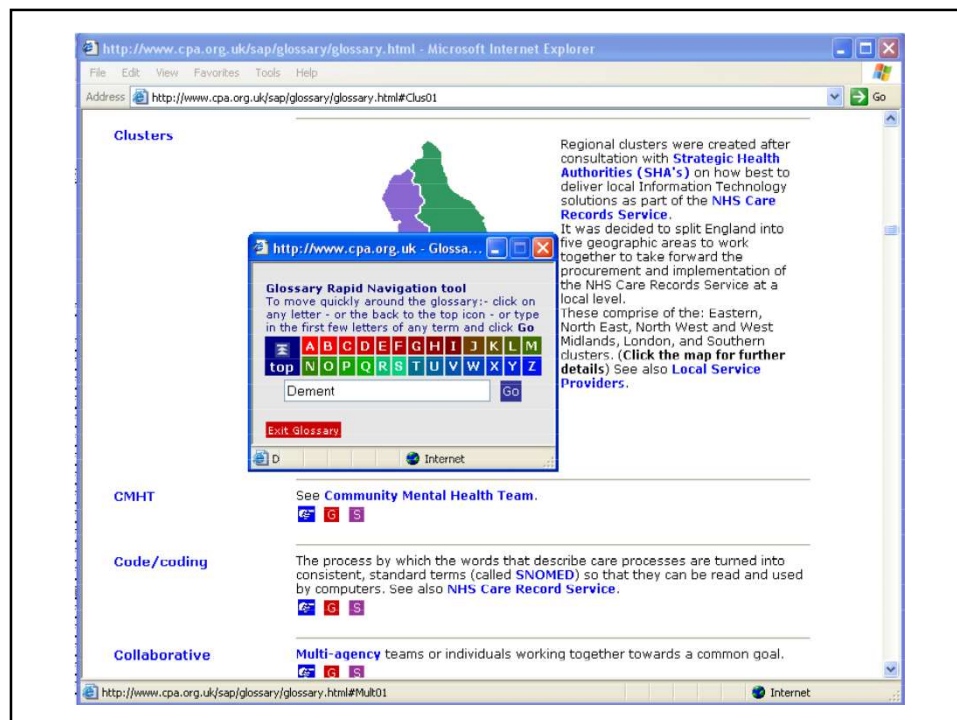


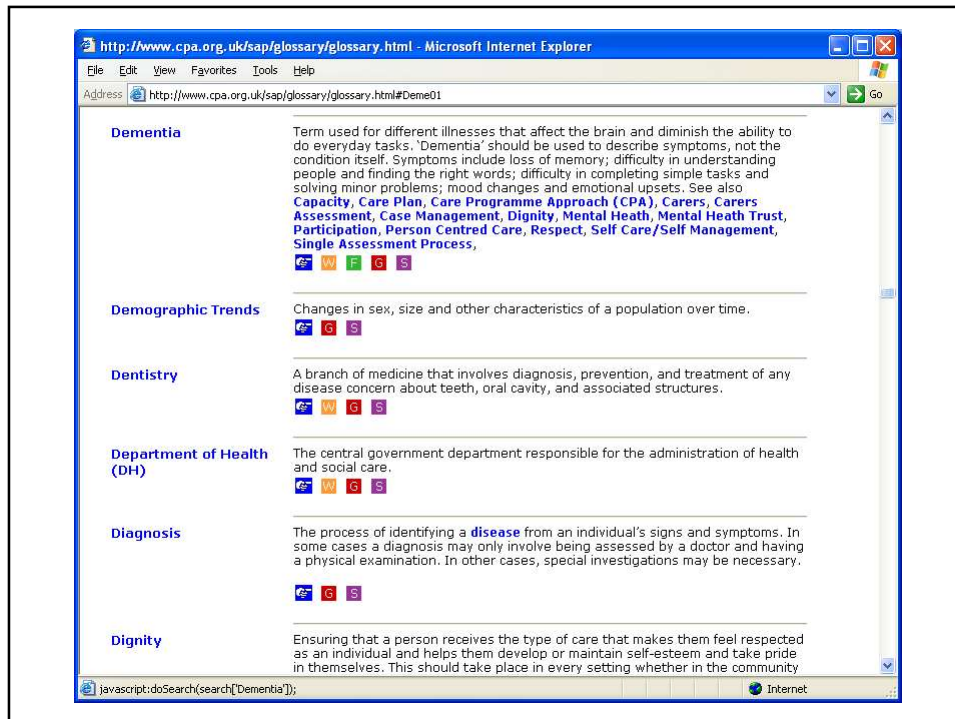


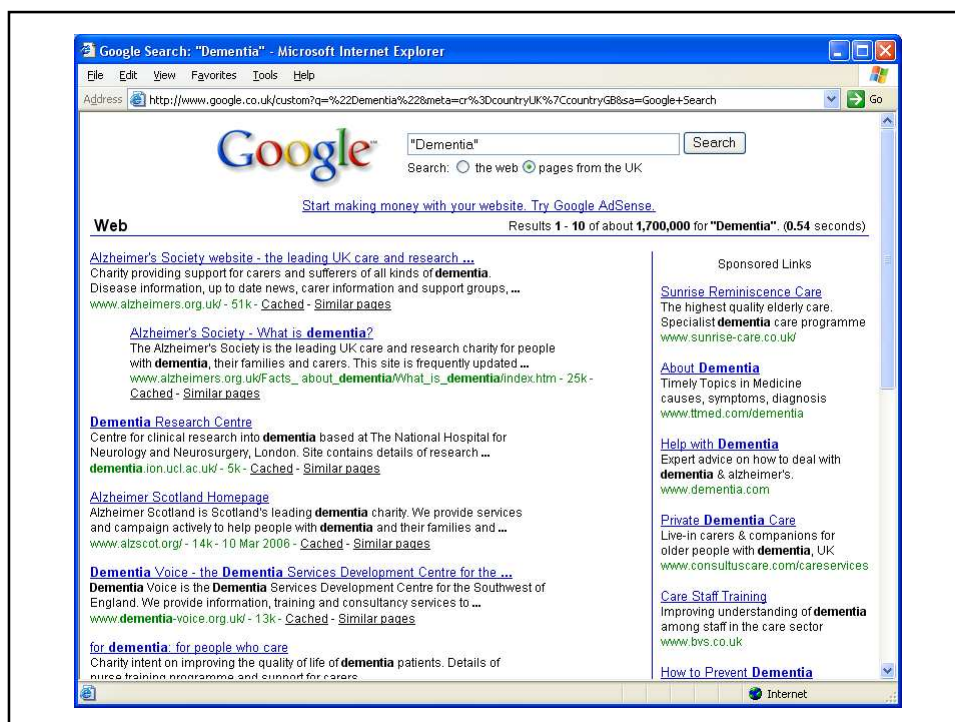
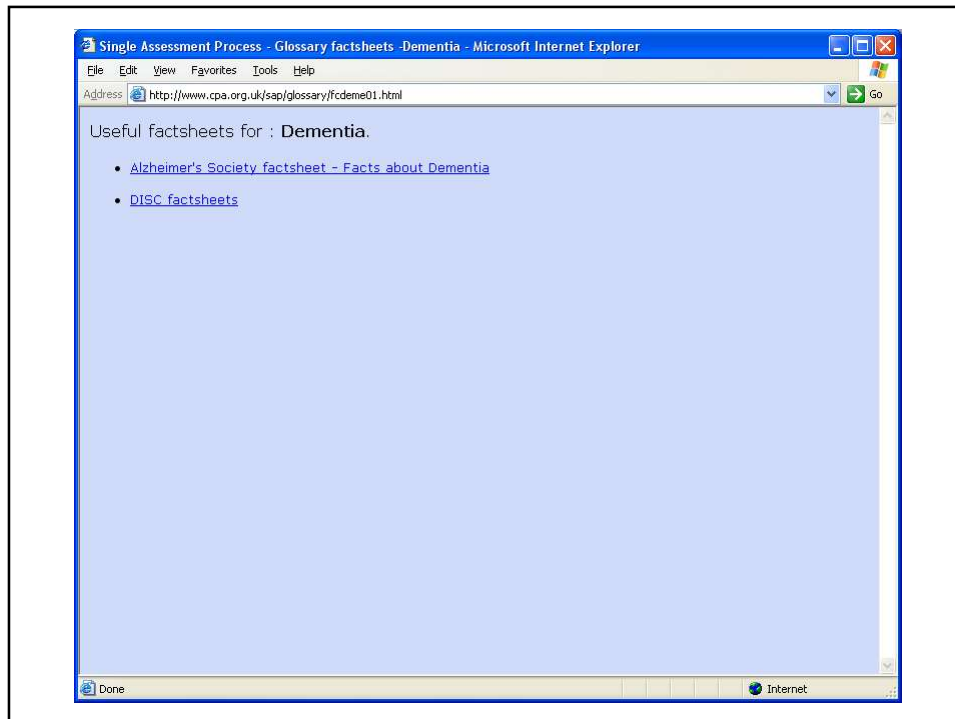


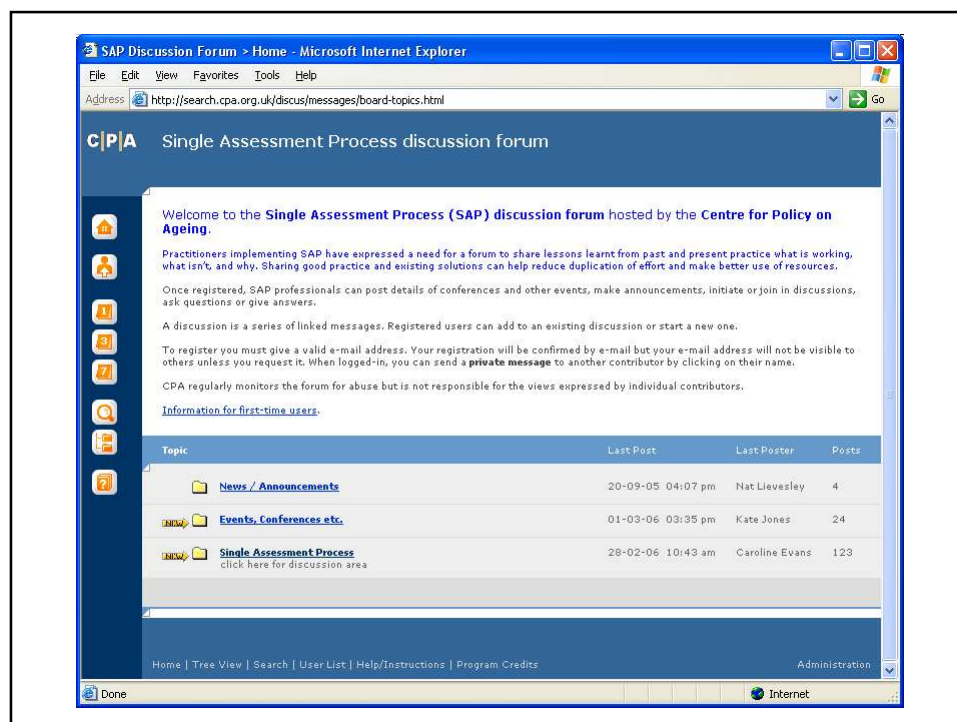
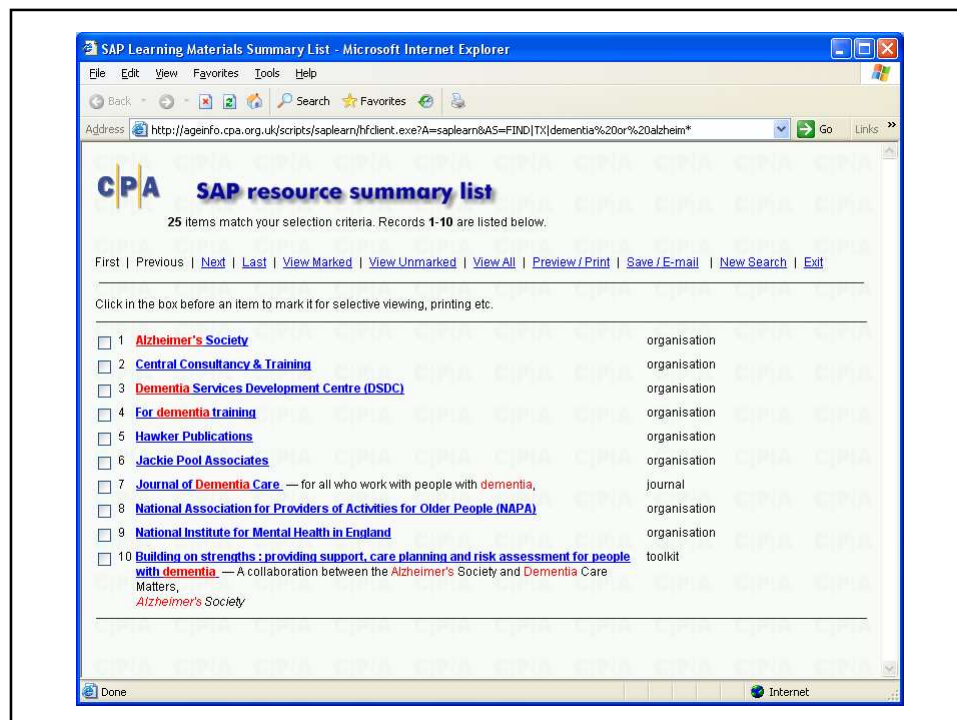


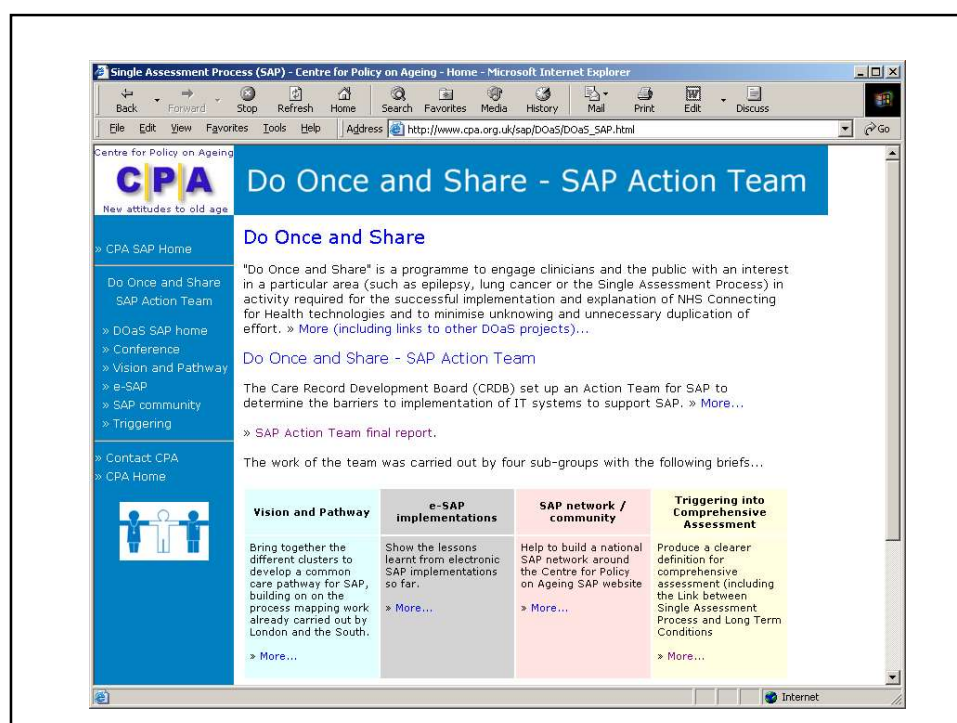
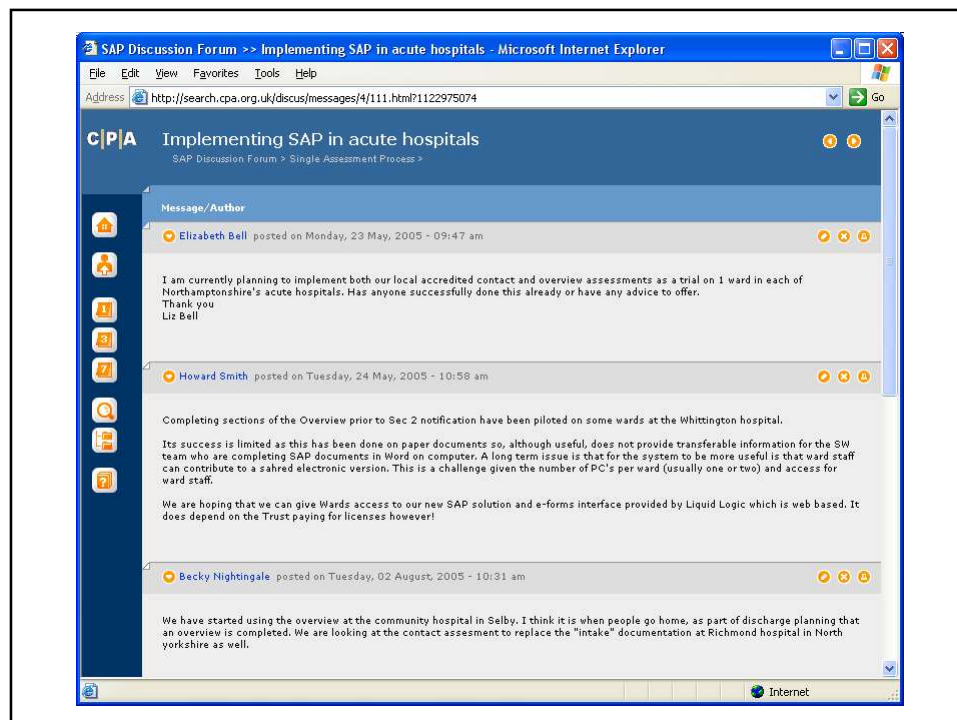


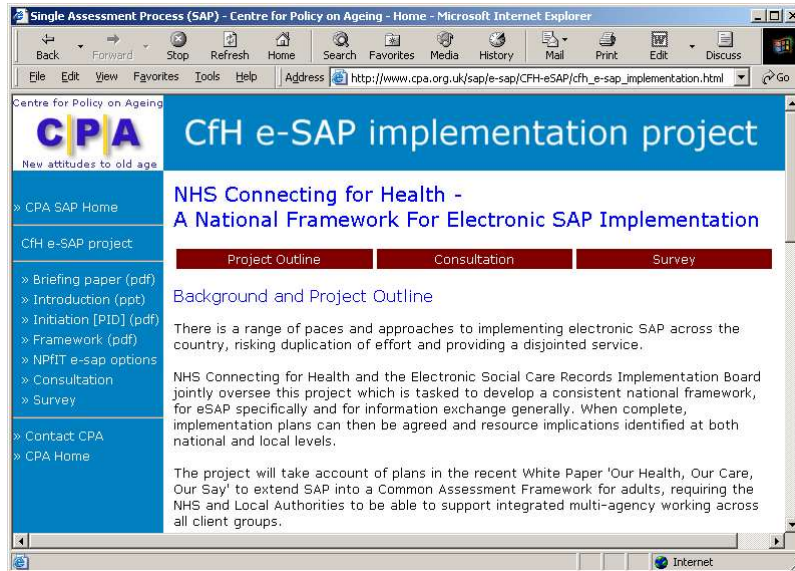












Future developments ?

Expand and extend...

- Do Once and Share
- e-SAP
- Long term conditions
- Specialist groups (eg OTs)
- new features – Newsletters etc

Future developments Common Assessment Framework

“Our health, our care our say” – White paper
January 2006

- section 5.26 – Better Assessment and Care Planning

...“We have already developed a *Single Assessment Process* for older people’s services. Work is underway to develop a *Common Assessment Framework* to ensure less duplication across different agencies and allow people to self-assess where possible.”...

**Retain the emphasis and focus
on person centred care and
engagement with older people.**

Nat Lievesley
CPA, December 2006